



Social exclusion and inequality

Erasmus+ Partnership (2017-19)

Denmark Poland Germany Italy Greece Spain

Göppingen

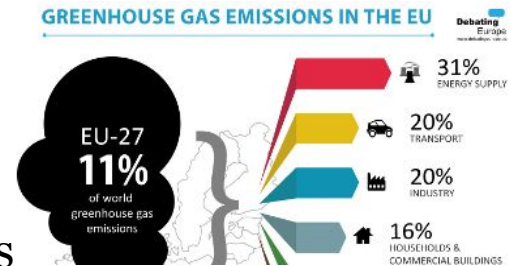
1. Compare the socioeconomic situation of our countries using the following table:

	Denmark	Germany	Italy	Poland	Greece	Spain
HDI	0.925	0.926	0.873	0.843	0.886	0.884
GINI	0.256	0.79	0.347	0.304	0.343	0.345
GDP	306,9b\$	823,88 per capita	25,484,99\$	579,48\$	289,398b\$	1118522
Per Capita Income	45.362,65\$	30,000 €	38,230\$	10,566.80\$	26,669	26,300
Unemployment rate	6.2%	5.3%	11.2%	6.6%	43.2%	16.7%
Literacy rate	99%	99%	99.2%	99.5%	95.3%	98,25%
Life expectancy	80.8 years	80.79 years	83 years	77 years	81.51	83
Occupied population by sectors	2,51%Primary 19,47%Secondary 77,95%Tertiary	28.11% primary sector 15.2% secondary sector 56.67% tertiary sector	3.9% primary sector 28.3% secondary sector 67.8% tertiary sector	11,5%Primary 30,44%Secondary 57,75%Tertiary	12,9%Primary 14,94%Secondary 72,16%Tertiary	2.1% primary sector 7.6% secondary sector 90.3% tertiary sector
Minimum wage	- No	8.84 per hour	1,560\$ per month	473.74\$ per month	480\$ per month	825.65\$ per month
Hospital beds/inhabitant (1,000)	2,5 (2015)	8.3	6.7	6.6	5.8	3.1
Doctors/inhabitant (1,000)	3,6	4.125	4.2	2.3	6.30	3.9
Other data	-	-	-	-	-	-

2. What is the Europe 2020 Strategy as adopted by the European Council on 17 June 2010? Please describe the main fields included in this Strategy.



- The Europe 2020 strategy was adopted back in 2010. It is the current agenda of EU for growth and jobs, for this decade. The structural weaknesses in Europe's economy, forces the EU to emphasize in smart and sustainable growth, in order to overcome the problem, and improve competitiveness and productivity.



3. How would you define the notion of *population at risk of poverty and social exclusion*?

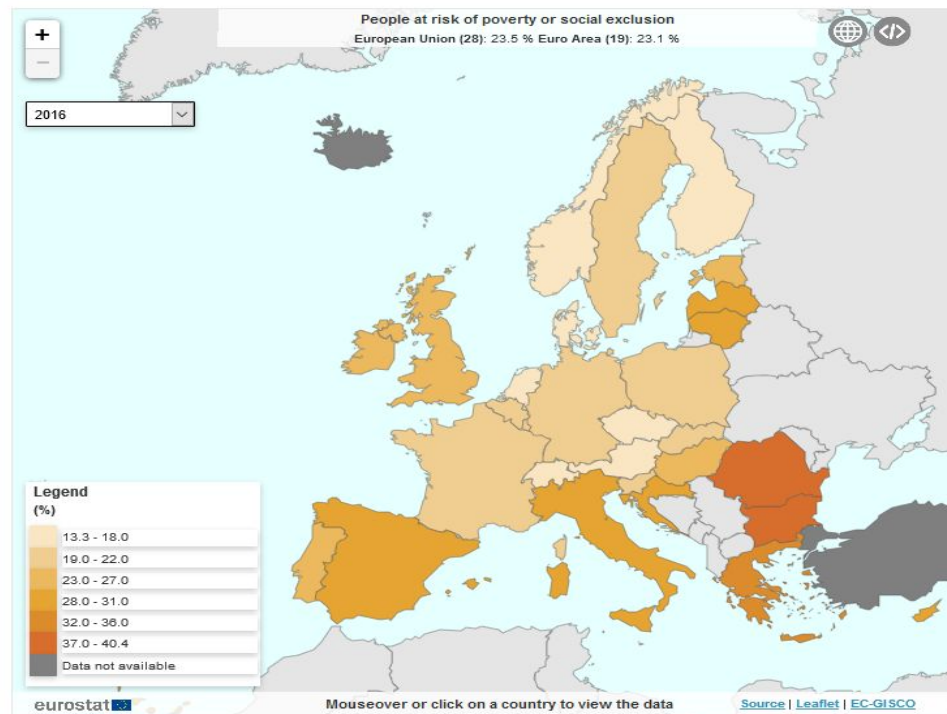


It's the percentage of the pop. That for their economic, work, or professional training conditions are in economic shortage.

4. Open the following URL:

<http://ec.europa.eu/eurostat/web/europe-2020-indicators/statistics-illustrated>

Open the window about poverty and social exclusion and check the situation in our countries.



5. Which are the positions of our countries in the EU? How has their situation evolved in recent years?

Country	% at risk of poverty or social exclusion	Position in the EU	Trend
Denmark	16.7	5	
Germany	19.7	12	
Italy	30	26	
Poland	21.9	16	
Greece	35.6	28	
Spain	27.9	24	

6. How would you describe the situation of our countries from the point of view of poverty and social exclusion? Which indicators should be improved in order to reach the goals of the EU for 2020?

Country	Indicators that need to be improved
Denmark	poverty, social exclusion
Germany	distribution of income and wealth
Italy	unemployment rate of young people
Poland	poverty, gross domestic expenditure on R&D
Greece	poverty, social exclusion, unemployment rate
Spain	final energy consumption, poverty and social exclusion